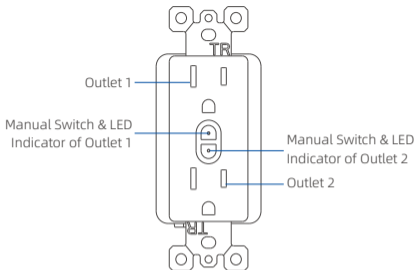


Installation Instruction

Smart In-Wall Outlet

ELEGRP

PRODUCT INTRODUCTION



SWITCH BUTTON OPERATION

- Press the manual switch to turn on/off its representative outlet.
- Press and hold any manual switch for 6s until the LED indicator flashes to connect to Wi-Fi.

LED INDICATOR

White

Power On

Flashing White

Connecting to Wi-Fi

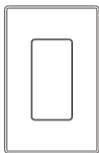
Red

Disconnected from Wi-Fi

WHAT'S IN THE BOX



Smart In-Wall Outlet



Face Plate



Fixing Plate



2 x Wall Plate Screws

2 x Mounting Screws

TOOLS NEEDED



Flat-Head
Screwdriver



Phillips
Screwdriver



Wire Strippers
(recommended)



Test Pencil
(recommended)

PRODUCT SPECIFICATION

Input: 125V AC, 60Hz

Output: 15A Maximum Load In Total

Resistive 15A Maximum

Motor 1/2 HP Maximum

INC/HAL 1000W Maximum

LED/CFL 3.75A (450W) Maximum

Wiring Gauge: #14 - #12 AWG Copper or Copper Clad Wires

Operating Temperature: 0°C~40°C (32°F~104°F)

Storage Temperature: -40°C~85°C (-40°F~185°F)

Purpose of Control: Wall Mounted Switch Control

Construction of Control: Independently Mounted for Flush Mounting

BEFORE WE START



⚠️ WARNINGS: To avoid fire, shock, or death, [turn off power at circuit breaker or fuse](#) and test that the power is off before wiring!

⚠️ AVERTISSEMENTS: Pour éviter le feu, les chocs ou la mort, [éteignez le disjoncteur ou le fusible](#) et vérifiez que l'alimentation est coupée avant le câblage!

⚠ CAUTIONS: The smart outlet must be installed and used in accordance with the National Electric Code (NEC) or your local electrical code.

⚠ MISES EN GARDE: La prise intelligente doit être installée et utilisée conformément au National Electric Code (NEC) ou à votre code électrique local.

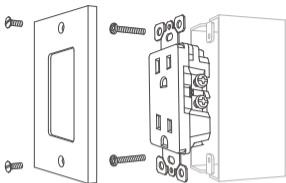
⚠ NOTES: Install only in a suitable UL listed outlet box. Suitable dimensions at least: 2.8"(H)x 1.8"(W) x 2"(D). Back and Side wire terminals accept #14-#12 AWG copper or copper clad wires.

⚠ REMARQUES : Installez uniquement dans une boîte de sortie homologuée UL. Dimensions appropriées au minimum: 2,8 po (H) x 1,8 po (L) x 2 po (P). Les bornes de câblage arrière et latérales acceptent les fils de cuivre ou plaqués cuivre de calibre #14-#12 AWG.



Consult a qualified electrician if you are unfamiliar with electrical codes and regulations, or are uncomfortable performing the installation.

REMOVE OLD OUTLET



After power is turned off, remove wall plate and outlet mounting screws. Carefully pull out the old outlet from the wall box and disconnect the wires from your old outlet.

STRIP WIRES



Make sure that the ends of the disconnected wires from the wall box are straight (cut if necessary). Remove 0.6" (15mm) of insulation from each wire in the wall box.



Turn Off Power

Before removing, turn off power at circuit breaker or fuse and use a test pencil to confirm whether power is off before wiring or servicing fixture!

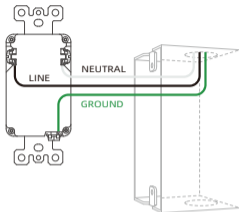
CONNECT OUTLET



Back Wire



Side Wire



Connect every wire as marked

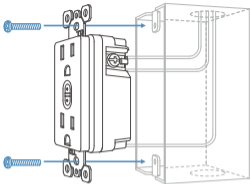
To Back Wire: Insert straight wires under clamps beside the appropriate terminal screws as shown above, and firmly tighten terminal screws with the torque values among 12-14 in-lbf (1.4-1.6 N·m).

To Side Wire: Loop wires around corresponding terminal screws as shown above and firmly tighten terminal screws with the torque values among 12-14 in-lbf (1.4-1.6 N·m).



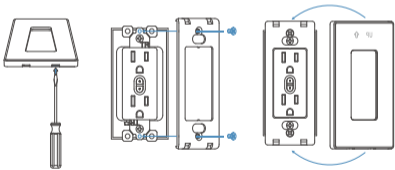
Line wires are usually black, Neutral wires are usually white and Ground wires are usually green or bare copper. If you are uncertain, please seek guidance from a qualified electrician.

FINISH WIRING



Form all wires carefully into wall box, and mount outlet with mounting screws supplied.

MOUNT WALL PLATE



Push a flat-head screwdriver into the slot at the bottom of the faceplate. Gently pry apart the two pieces.

Use the short screws to mount the fixing plate.

Push faceplate onto the fixing plate and snap it into place.

TROUBLESHOOTING

After installation, the outlet does not power on?

- Check if the circuit breaker or fuse is connected properly.
- Make sure your wiring is correct and reliable.

Difficulty in connecting smart outlet to a Wi-Fi network?

- Make sure the Wi-Fi network is a 2.4 GHz network.
- The Wi-Fi connection may not have good coverage. Try moving your Wi-Fi router closer to the smart outlet.



Refer to help center in the app for additional troubleshooting suggestions

ONE YEAR LIMITED WARRANTY

The warranty gives you specific rights and you may also have other rights, which vary in different states and countries. Our company warrants to the original consumer purchaser that this product is free of defects in materials and workmanship for 1 year from the purchase date. **This warranty does not cover labor for removal or reinstallation of the product and is void on any product installed improperly or in an improper environment, overloaded, misused, opened, abused, or altered in any manner.** Our company excludes incidental or consequential damages for breach of any warranty on this product. Some jurisdictions may not allow limitations on how long an implied warranty lasts or the exclusion or limitation of incidental or consequential damages, so the above exclusions or limitations may not apply to you.

FCC COMPLIANCE STATEMENT

This device complies with part 15 of the FCC Rules. Operation is subject to the following two conditions: (1) This device may not cause harmful interference, and (2) this device must accept any interference received, including interference that may cause undesired operation.

FCC Caution: Any Changes or modifications not expressly approved by the party responsible for compliance could void the user's authority to operate the equipment. This product must be installed and operated with a minimum distance of 20 cm between the radiator and user body. Contains Transmitter Module
FCC ID: 2ANDL-CBU.

Note: The manufacturer is not responsible for any radio or TV interference caused by unauthorized modifications to this equipment. Such modifications could void the user's authority to operate the equipment. This equipment has been tested and found to comply with the limits for a Class B digital device, pursuant to part 15 of the FCC Rules. These limits are designed to provide reasonable protection against harmful interference in a residential installation. This equipment generates, uses and can radiate radio frequency energy and, if not installed and used in accordance with the instructions, may cause harmful interference to radio communications. However, there is no guarantee that interference will not occur in a particular installation. If this equipment does cause harmful interference to radio or television reception, which can be determined by turning the equipment off and on, the user is encouraged to try to correct the interference by one or more of the following measures:

- Reorient or relocate the receiving antenna.
- Increase the separation between the equipment and receiver.
- Connect the equipment into an outlet on a circuit different from that to which the receiver is connected.
- Consult the dealer or an experienced radio/TV technician for help.

ISED CANADA COMPLIANCE STATEMENT

This device contains license-exempt transmitter(s) / receiver(s) that comply with Innovation, Science and Economic Development Canada's license exempt RSS(s). Operation is subject to the following two conditions:

- (1) This device may not cause interference.
- (2) This device must accept any interference, including interference that may cause undesired operation of the device.

L'émetteur/récepteur exempt de licence contenu dans le présent appareil est conforme aux CNR d'Innovation, Sciences et Développement économique Canada applicables aux appareils radio exempts de licence. L'exploitation est autorisée aux deux conditions suivantes :

- (1) L'appareil ne doit pas produire de brouillage;
- (2) L'appareil doit accepter tout brouillage radioélectrique subi, même si le brouillage est susceptible d'en compromettre le fonctionnement.

This device complies with Radio Apparatus Standard of RSS-247. Cet appareil est conforme à la norme d'appareils de radio de CNR-247.

Radiation Exposure Statement

This equipment complies with RSS-102 radiation exposure limits set forth for an uncontrolled environment. This equipment should be installed and operated with the distance more than 20cm between the radiator & your body.

Déclaration d'exposition aux radiations:

Cet équipement est conforme aux limites d'exposition aux rayonnements CNR-102 établies pour un environnement non contrôlé. Cet équipement doit être installé et utilisé à une distance supérieure à 20 cm entre le radiateur et votre corps.

HAVING PROBLEMS? WE CAN HELP!

Email: support@elegrp.com

Call us on: 866-267-3272 Mon-Fri 9:00-17:00 EST (US)

Feel free to contact us with any questions or concerns.
Our customer service team will work hard to put a smile
back on your face.

About Us

Website: www.elegrp.com

Search **ELEGRP** on social media